

Shakti Pumps is a globally recognized leader in the manufacturing of high-performance industrial and submersible pumps and motors, with over 40 years of engineering excellence. Since 2010, we have proudly served 500+ satisfied customers across 48 U.S. states and currently export to 125 countries worldwide. As a **True Manufacturer**, we deliver premium quality, competitively priced pumping solutions that offer a distinct competitive edge and long-term value across diverse market segments.



# Globally Renowned, Shakti Pumps.

[www.shaktipumps.us](http://www.shaktipumps.us)

### Shakti Pumps USA LLC

740, Florida Central Parkway, Suite # 1008, Longwood, FL-32750, USA  
Phone: +1 - 407-574-4001, +1 - 407-574-2797, Email: [usa@shaktipumps.com](mailto:usa@shaktipumps.com)

**Shakti Pumps USA LLC: Stocking Location # 1:** Plant city, Florida

**Shakti Pumps USA LLC: Stocking Location # 2:** Fresno, CA

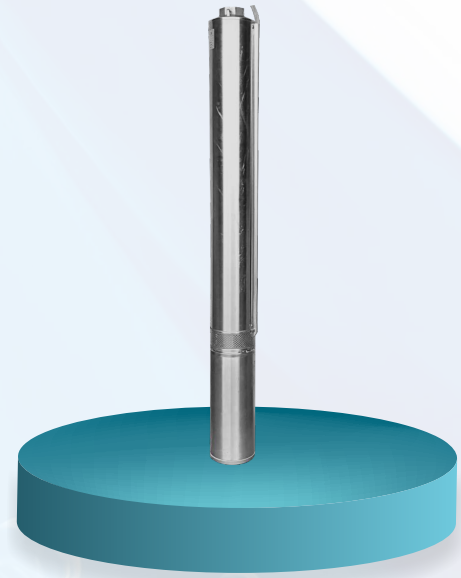
**Shakti Pumps USA LLC: Stocking Location # 3:** Salt lake City, Utah

**Shakti Pumps USA LLC: Stocking Location # 4:** Columbus, Ohio

**Shakti Pumps USA LLC: Stocking Location # 5:** Amarillo, Texas

Jun. 2025/R2 SAP No. 2900000610

Nov./2025-26/L18/1000 VC - 6241



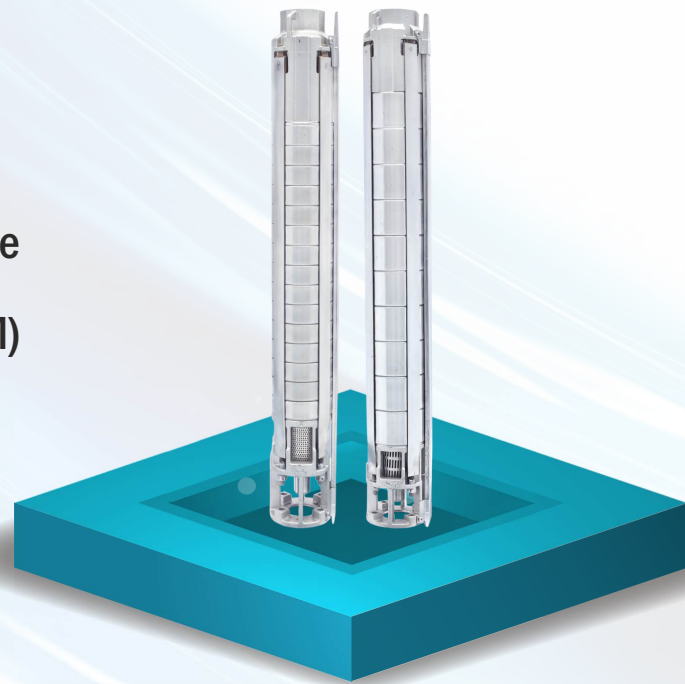
**3"  
Submersible  
Noryl Pumps  
(10 & 22 GPM)**

**SPECIFICATION**

60Hz NORTH AMERICA

Model No.	10 SPC	22 SPC
Flow (GPM)	10	22
Max. Head (Ft)	510	290
Outlet Size (Inch)	1.25"	1.5"

**4"  
Submersible  
Pumps  
(5 - 75 GPM)**

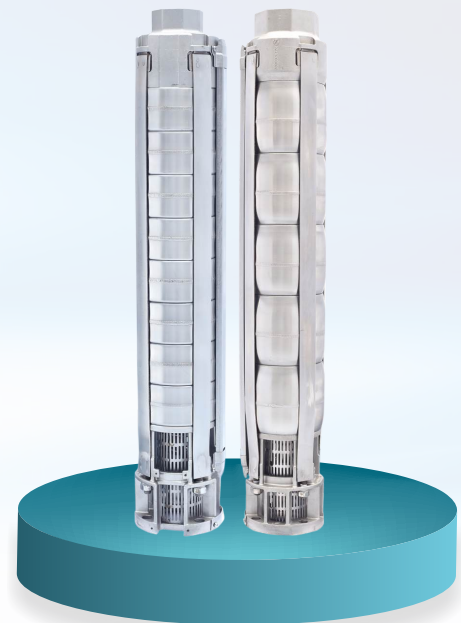


**SPECIFICATION**

60Hz NORTH AMERICA

Model No.	QF1	QF2	QF5	QF6	QF12	QF20	QF25
Flow (GPM)	5	10	16	25	40	60	75
Max. Head (Ft)	830	1575	1980	1275	1580	510	460
Outlet Size (Inch)	1 1¼	1 1¼	1¼	1½	2	2	2

**6"  
Submersible  
Pumps  
(85 - 300 GPM)**



**SPECIFICATION**

60Hz NORTH AMERICA

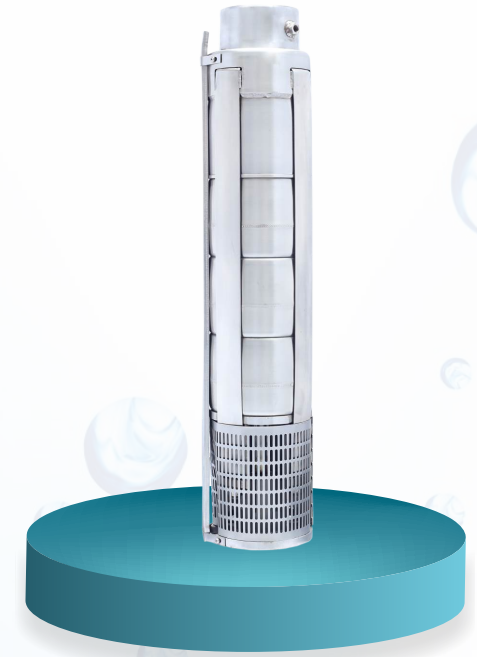
Model No.	QF30	QF50	QF75	QF100
Flow (GPM)	85	150	230	300
Max. Head (Ft)	2080	2040	1390	1220
Outlet Size (Inch)	2½ 3	3	3 4	3 4

**SPECIFICATION**

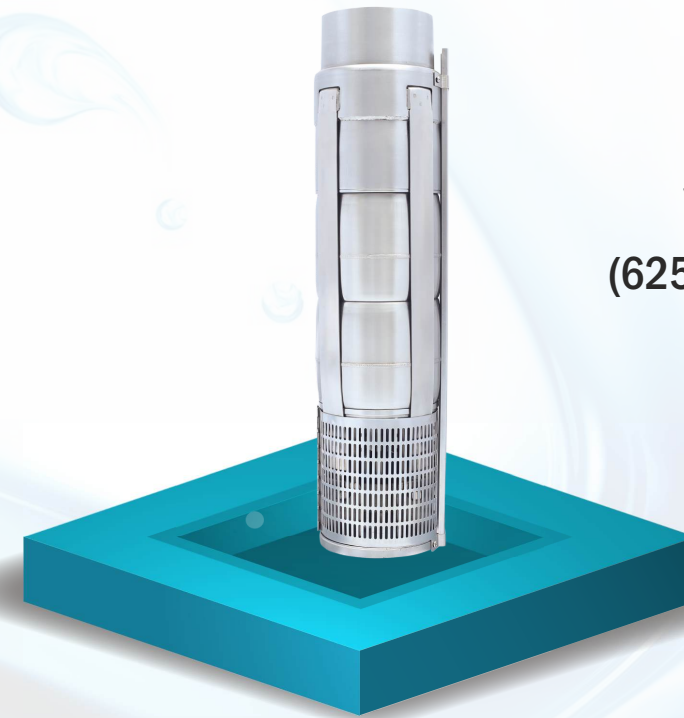
60Hz NORTH AMERICA

Model No.	QF125	QF160
Flow (GPM)	385	475
Max. Head (Ft)	1240	1280
Outlet Size (Inch)	5	5

**8"  
Submersible  
Pumps  
(385 - 475 GPM)**



**10"  
Submersible  
Pumps  
(625 - 800 GPM)**

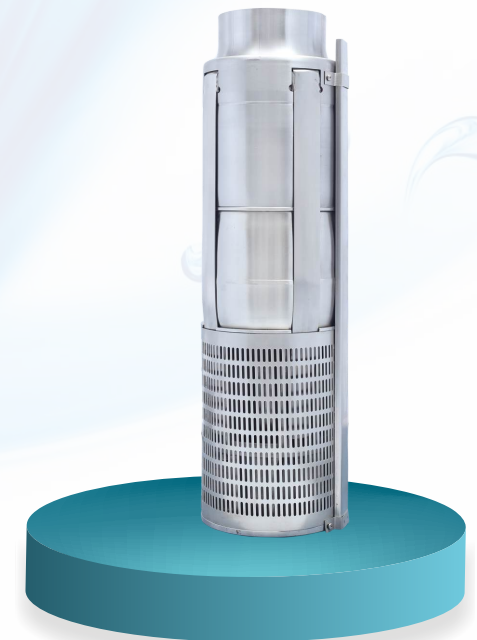


**SPECIFICATION**

60Hz NORTH AMERICA

Model No.	QF210	QF270
Flow (GPM)	625	800
Max. Head (Ft)	990	780
Outlet Size (Inch)	6	6

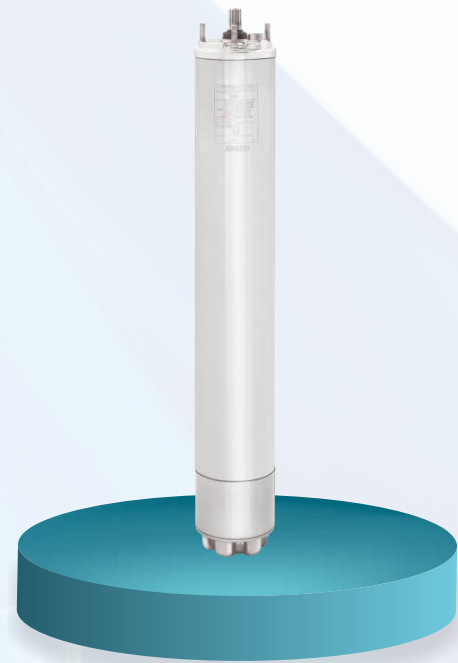
**12"  
Submersible  
Pumps  
(1100 GPM)**



**SPECIFICATION**

60Hz NORTH AMERICA

Model No.	QF360
Flow (GPM)	1100
Max. Head (Ft)	1120
Outlet Size (Inch)	6



**4"  
Premium  
Series**  
(3 wire & 2 wire  
Encapsulated Motors)

**SPECIFICATIONS**

Nominal Dia. : 4 inch  
 Power range : (0.5hp-5hp) (Single Phase)  
 : (0.5hp-10hp) (Three Phase)  
 Speed : 3450 RPM, 60 Hz  
 Versions : 230V & 60Hz (Single phase)  
 : 230/460 V, 60 Hz (Three Phase)  
 : Direct On Line (DOL)  
 Thrust Rating : 1500-6500 N  
 Type of Duty : S1 (Continuous)  
 Degree of Protection : IP 68  
 Class of Insulation : B  
 Maximum Liquid Temperature : 30°C / 86°F

**SPECIFICATIONS**

Nominal Dia. : 6 inch  
 Power range : 5hp - 50hp  
 Speed : 3450 RPM, 60 Hz  
 Versions : 230/460 V, 60 Hz  
 Thrust Rating : 15500 N - 27500 N  
 Type of Duty : S1 (Continuous)  
 Degree of Protection : IP 68  
 Maximum Liquid Temperature : 30°C/86°F  
 Optional : "PE2/ PA winding insulation for  
 Max. ambient temperature of 50°C/122°F  
 at the same cooling conditions as standard"

**6"  
MTSF-CI &  
SS 304 Series**



**8"  
MTSF Series**



**SPECIFICATIONS**

Nominal Dia. : 8 inch  
 Power range : 30hp-125hp  
 Speed : 3450 RPM, 60 Hz  
 Versions : 460 V, 60 Hz  
 Thrust Rating : 45000 N  
 Type of Duty : S1 (Continuous)  
 Degree of Protection : IP 68  
 Maximum Liquid Temperature : 30°C/86°F  
 Optional : PE2/ PA winding insulation for  
 Max. ambient temperature of 50°C/122°F  
 at the same cooling conditions as standard

30 HP - 60 HP motors are also available in 6" pump joining."

**SPECIFICATIONS**

Nominal Dia. : 10 inch  
 Power range : 125hp-250hp  
 Speed : 3450 RPM, 60 Hz  
 Versions : 460 V, 60 Hz  
 Thrust Rating : 60000 N  
 Type of Duty : S1 (Continuous)  
 Degree of Protection : IP 68  
 Maximum Liquid Temperature : 30°C/86°F  
 Optional : PE2/ PA winding insulation for  
 Max. ambient temperature of 50°C/122°F  
 at the same cooling conditions as standard

**10"  
MTSF Series**



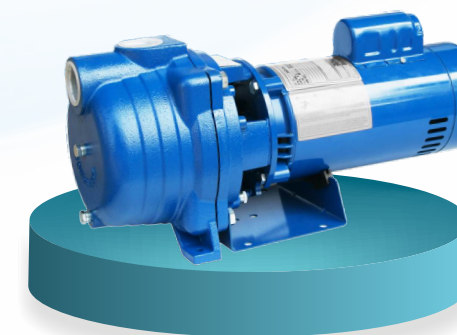
**SPS  
Shallow Well  
Jet Pump**



**SPECIFICATION**

Model No.	Model Name	HP	Suction	Discharge
9000024190	SPS05	0.5	1.25" NPT	1" NPT
9000024189	SPS07	0.75	1.25" NPT	1" NPT
9000023257	SPS10	1.0	1.25" NPT	1" NPT
9000023259	SPS15	1.5	1.25" NPT	1" NPT

**SPI  
Self Priming  
Centrifugal Pump**



**SPECIFICATION**

Model No.	Model Name	HP	Suction	Discharge
9000024187	SPI07	0.75	1.5" NPT	1.5" NPT
9000024188	SPI10	1.0	1.5" NPT	1.5" NPT
9000028082	SPI15	1.5	1.5" NPT	1.5" NPT
9000023739	SPI20	2.0	1.5" NPT	1.5" NPT

## New Products



10" Submersible Turbine Pump  
SSP290

Model Name	HP	Flow (GPM)	Max Head (Ft)
SSP 290-1A	100	1600	230
SSP 290-1B	75		210
SSP 290-1C	60		185
SSP 290-1D	50		170
SSP 290-1E	40		150
SSP 290-1F	30		120

## Pipes

The SHAKTI PVC drop pipe offers smooth water flow, corrosion resistance, and high tensile strength. Available in Schedule 40, 80, and 120 in NPT threaded both ends from 1"-3" and Flat threaded from 1"-6".



## Cable

The SHAKTI 1100V flat jacketed cable is built for submersible pumps with moisture-resistant PVC insulation.. It is ideal for residential, farm, and industrial wells. Available in both 19 strands and fine strands configuration.

Shakti's Head Office



Shakti : "A True Manufacturer"

